

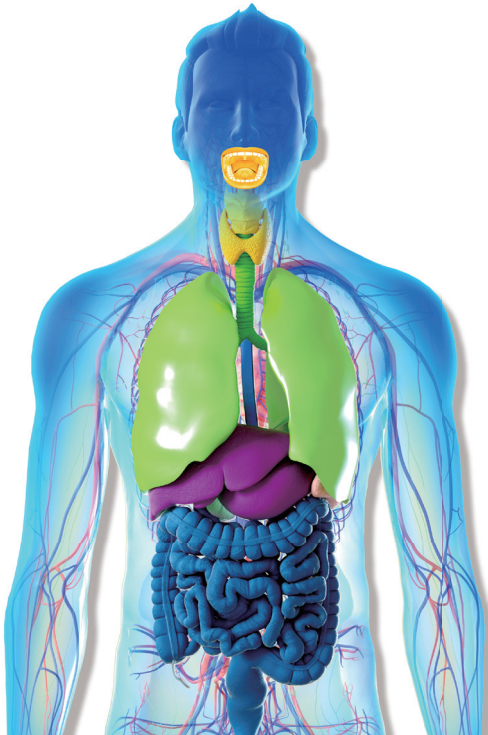


GUNZE
GUNZE MEDICAL

ABSORBABLE POLYGLYCOLIC ACID FELT

NEOVEIL™

Usable all over the human body



ENT, Oral & Maxillofacial surgery

Thoracic surgery

Hepatobiliary & Pancreatic surgery

ESD (Endoscopic submucosal dissection)

INDICATIONS

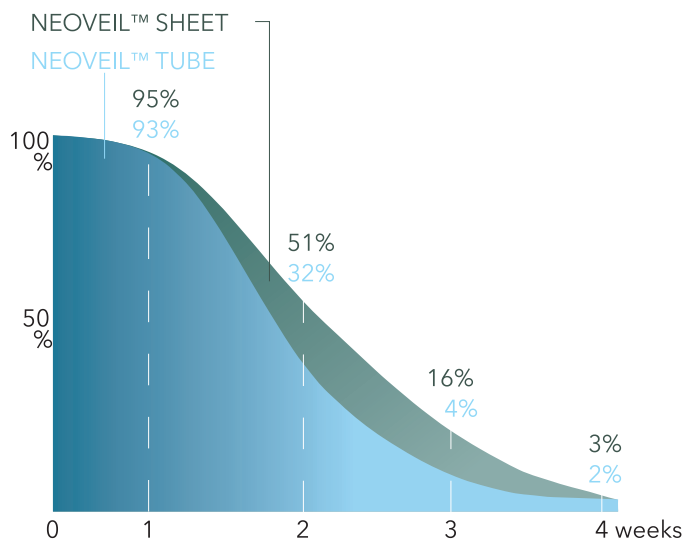
1. Reinforcement for regions which do not take a long time to heal.
2. Reinforcement for regions of soft tissues/organs in thoracic, abdominal and oral surgery.
3. Prevention of air leakage from the lung, bronchi and diaphragm, where such prevention is difficult to perform by only using sutures or surgical staplers.

NEOVEIL™ has been used successfully in various areas of the body. Ask the GUNZE Team for case reports to get more information. Make sure to consult the IFU before application.

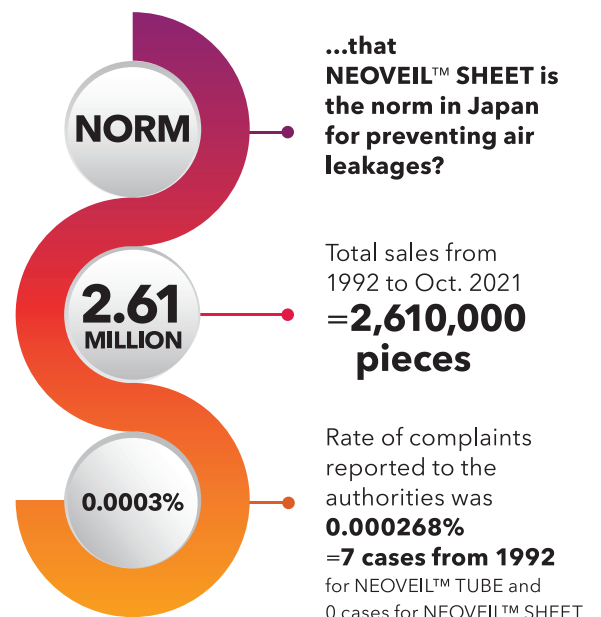
Retention of strength

NEOVEIL™ degrades by hydrolysis

- Completely absorbed after about 15 weeks



Did you know...



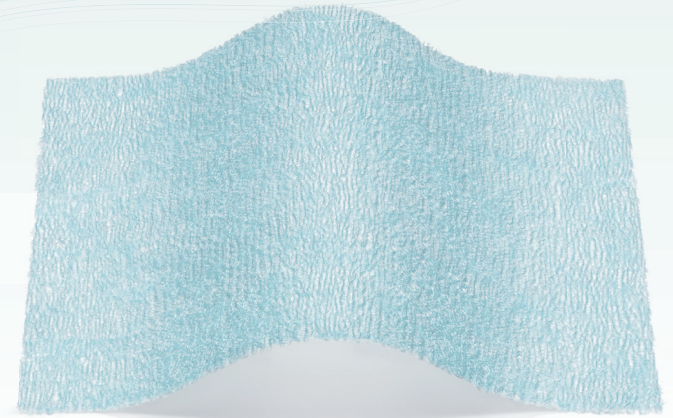
*According to GUNZE PMS data



NEOVEIL™ TUBE

FOR OPEN SURGERY & ENDOSCOPY

NEOVEIL™ SHEET



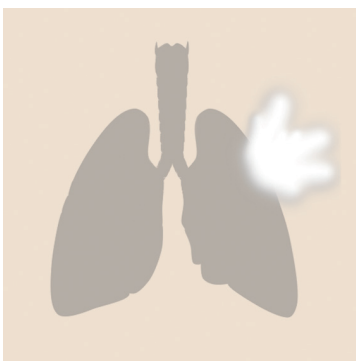
PRODUCT OUTLINE

What's NEOVEIL™?

- 100% Polyglycolic acid
- BIOABSORBABLE
- SOFT TISSUES/ORGANS REINFORCEMENT MATERIAL

The intended use of NEOVEIL™ is to **REINFORCE SUTURED AREAS**

ADVANTAGES



**PREVENTING
AIR LEAKAGE**



**PREVENTING
FLUID LEAKAGE**



**PREVENTING POSTOPERATIVE
PANCREATIC FISTULA**

PRODUCT VARIATION NEOVEIL™ SHEET

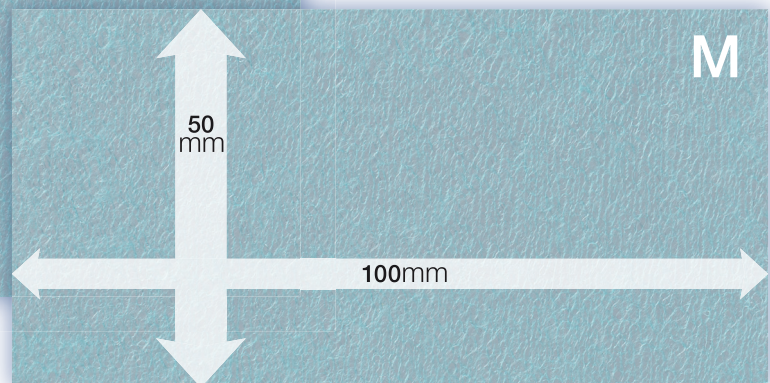
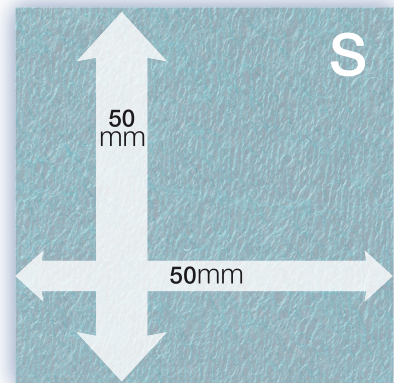
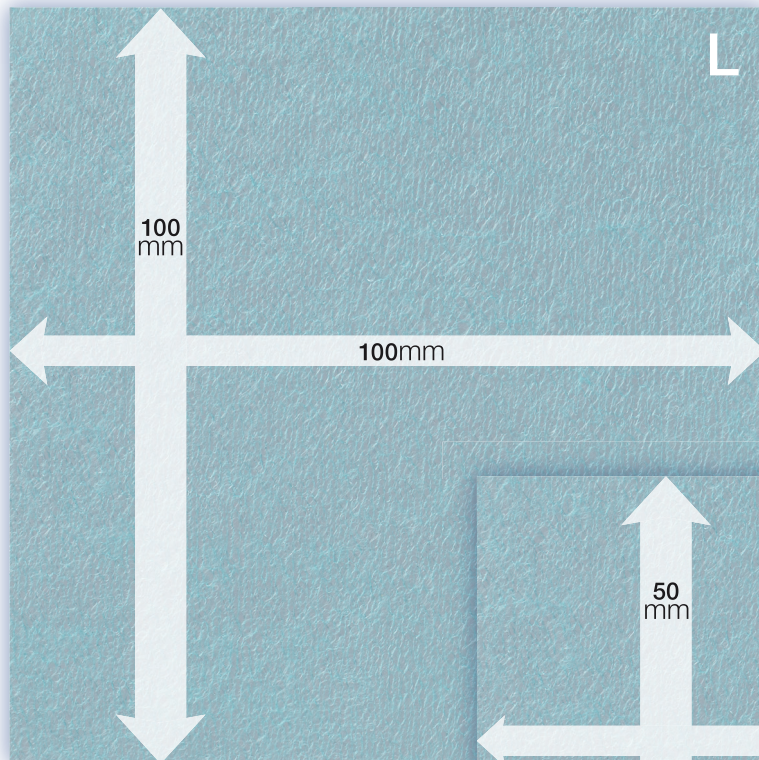
NEOVEIL™ is green, which makes it easy to distinguish from clinical tissues.

Code	Size
NV-L-05G	100 x 100 x 0.5 mm
NV-L-03G	100 x 100 x 0.3 mm
NV-L-015G	100 x 100 x 0.15 mm
NV-M-05G	100 x 50 x 0.5 mm
NV-M-03G	100 x 50 x 0.3 mm
NV-M-015G	100 x 50 x 0.15 mm
NV-S-05G	50 x 50 x 0.5 mm
NV-S-03G	50 x 50 x 0.3 mm



1 sheet / box

SIZE VARIATION (Full scale)



PRODUCT VARIATION NEOVEIL™ TUBE

(1) For Open Surgery

Code	Supported stapler models
NV-T-M60-R	[Johnson & Johnson] PROXIMATE 55mm Linear Cutter
	[Medtronic] MULTIFIRE GIA 60 Cartridge
	[Medtronic] GIA 60 Cartridge
NV-T-M80-R	[Johnson & Johnson] PROXIMATE 75mm Linear Cutter
	[Medtronic] MULTIFIRE GIA 80 Cartridge
	[Medtronic] GIA 80 Cartridge
NV-T-M90-R	[Medtronic] GIA 90P Cartridge



1 set / box

(2) For Endoscopic Surgery

Code	Supported stapler models
NV-ET-M45E-2	[Johnson & Johnson] ECHELON ENDOPATH 45mm Stapler
	[Johnson & Johnson] ECHELON FLEX ENDOPATH 45mm Stapler
	[Johnson & Johnson] ECHELON FLEX Powered ENDOPATH 45mm Stapler
	[Medtronic] ENDO GIA II 45 Cartridge (Green)
	[Medtronic] ENDO GIA Reticulator 45 Cartridge (Green)
	[Medtronic] ENDO GIA 45mm Articulating Extra-Thick Reload with Tri-Staple Technology (Black)
NV-ET-M60E-2	[Johnson & Johnson] ECHELON ENDOPATH 60mm Stapler
	[Johnson & Johnson] ECHELON FLEX ENDOPATH 60mm Stapler
	[Johnson & Johnson] ECHELON FLEX Powered ENDOPATH 60mm Stapler
	[Medtronic] ENDO GIA II 60 Cartridge (Green)
	[Medtronic] ENDO GIA Reticulator 60 Cartridge (Green)
	[Medtronic] ENDO GIA 60mm Articulating Extra-Thick Reload with Tri-Staple Technology (Black)
NV-ET-M45A-2	[Medtronic] ENDO GIA II 45 Cartridge (Blue, White, Gray)
	[Medtronic] ENDO GIA Reticulator 45 Cartridge (Blue, White, Gray)
	[Medtronic] ENDO GIA 45mm Articulating Medium/Thick Reload with Tri-Staple Technology (Purple)
	[Medtronic] ENDO GIA 45mm Articulating Vascular/Medium Reload with Tri-Staple Technology (Tan)
	[Medtronic] ENDO GIA 45mm Articulating Vascular Reload with Tri-Staple Technology (Gray)
NV-ET-M60A-2	[Medtronic] ENDO GIA II 60 Cartridge (Blue, White)
	[Medtronic] ENDO GIA Reticulator 60 Cartridge (Blue, White)
	[Medtronic] ENDO GIA 60mm Articulating Medium/Thick Reload with Tri-Staple Technology (Purple)
	[Medtronic] ENDO GIA 60mm Articulating Vascular/Medium Reload with Tri-Staple Technology (Tan)
	[Medtronic] ENDO GIA 60mm Articulating Vascular Reload with Tri-Staple Technology (Gray)
NV-ET-M45EZ-R	[Johnson & Johnson] EZ 45mm Endocutter (Blue, Green)
NV-ET-M45E-R	[Johnson & Johnson] ETS 45mm Endocutter
	[Johnson & Johnson] ETS Flex 45mm Endocutter
	[Johnson & Johnson] ETS Compact-Flex 45mm Endocutter
NV-ET-M30A-R	[Medtronic] ENDO GIA II 30 Cartridge
	[Medtronic] ENDO GIA Reticulator 30 Cartridge
NV-ET-M30AI-R	[Medtronic] ENDO GIA 30 Cartridge
NV-ET-M60AI-R	[Medtronic] ENDO GIA 60 Cartridge

The color in parentheses is the color of the cartridge attached to the stapler. It is not the color of NEOVEIL™.

NEOVEIL™ SHEET
Product video



NEOVEIL™ TUBE
Product video



Distributor

GUNZE
GUNZE MEDICAL

GUNZE LIMITED Medical Division
<http://www.gunze.co.jp/e/medical/>

46, Natsumegaichi, Aono-cho, Ayabe,
Kyoto 623-8513, Japan

Japan/Asia Pacific

**GUNZE MEDICAL LIMITED
TOKYO OFFICE**

15F, Tokyo Shiodome Bldg., 1-9-1,
Higashi Shimbashi, Minato-ku,
Tokyo 105-7315, Japan
Tel: +81-3-4485-0007
Fax: +81-3-4485-0040

Europe

**GUNZE INTERNATIONAL
EUROPE GmbH**

Oststraße 80, 40210 Düsseldorf, Germany
Tel: +49-211-3613-971
Fax: +49-211-3613-164

China

**GUNZE MEDICAL DEVICES
(SHENZHEN) LIMITED**

Room 802, Kerry Centre, 2008 Renminnan Rd.,
SHENZHEN 518001 P.R. China
Tel: +86-755-8230-0553
Fax: +86-755-8230-0469

U.S.A.

**GUNZE INTERNATIONAL USA,
INCORPORATED**

390 Fifth Avenue, Suite 903, New York,
NY 10018, U.S.A.
Tel: +1-212-354-9060
Fax: +1-212-354-6171